

Inferring macroevolutionary dynamics of extinct clades: a test using 'bird-hipped' dinosaurs (Ornithischia)

David Černý¹ Daniel Madzia Graham J. Slater

¹University of Chicago

Evolution, June 22, 2019, Providence, RI



Daniel Madzia
Institute of Paleobiology
Polish Academy of Sciences

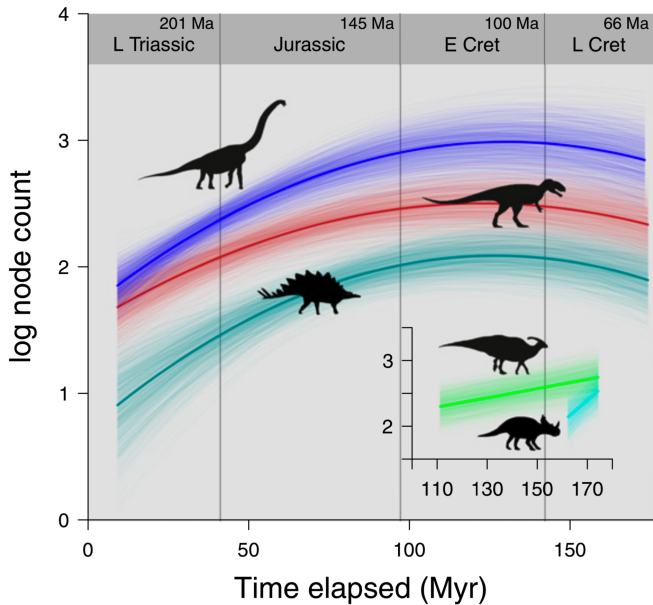


Graham Slater
University of Chicago





© Andrey Atuchin. Used with permission.

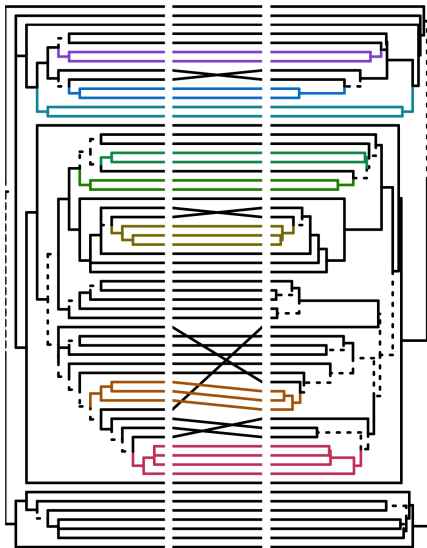


Modified from Sakamoto et al. 2016, Figure 2

Han et al. 2017

TNT reduced cons.

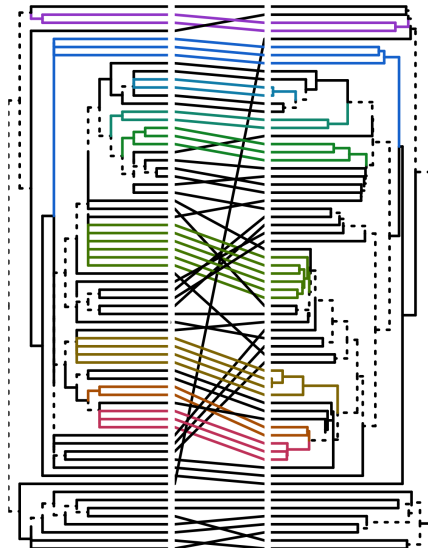
BEAST 2 MCC



Madzia et al. 2018

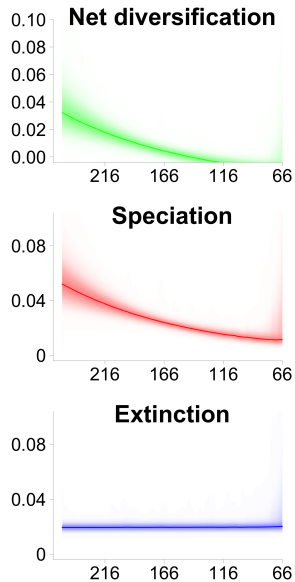
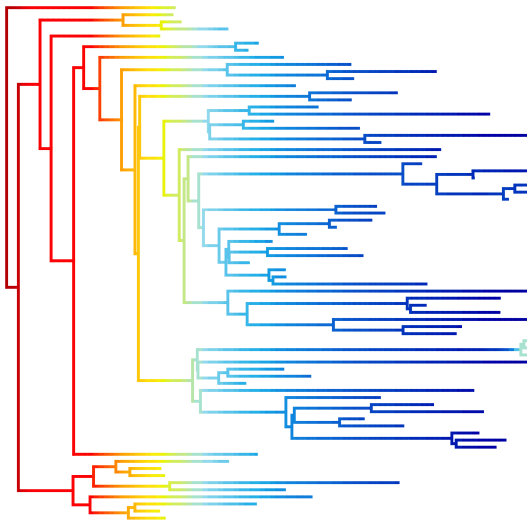
TNT strict cons.

BEAST 2 MCC

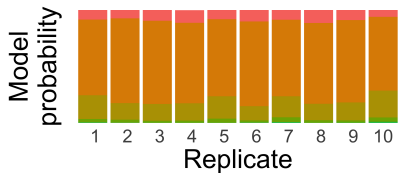


Madzia et al. 2018

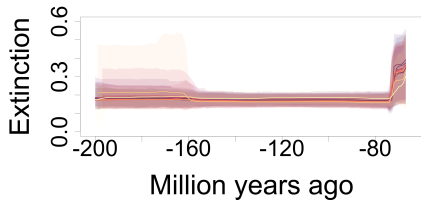
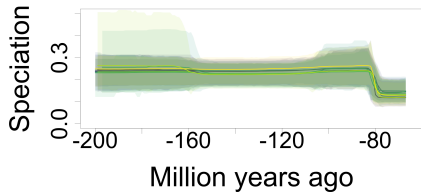
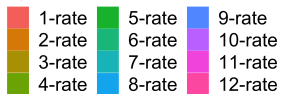
Net diversification



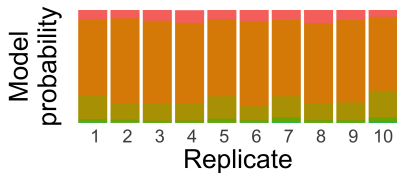
birth-death MCMC



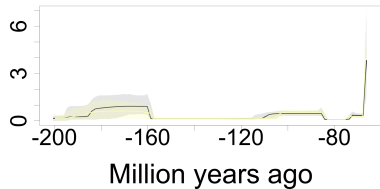
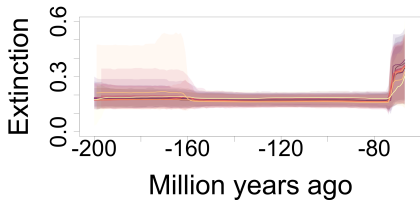
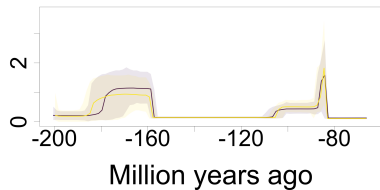
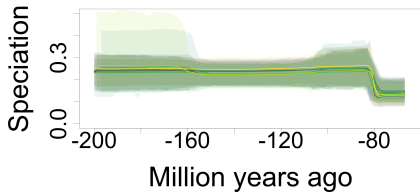
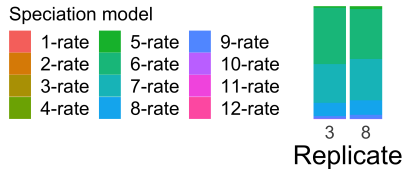
Speciation model



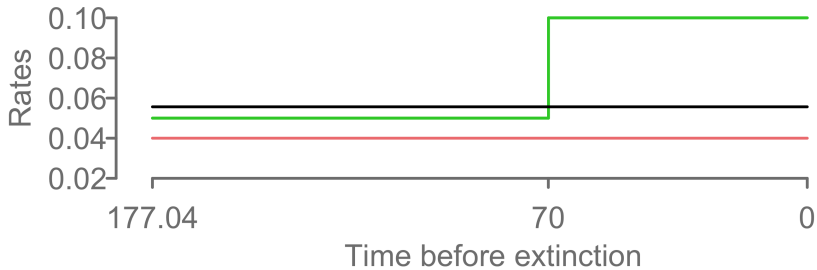
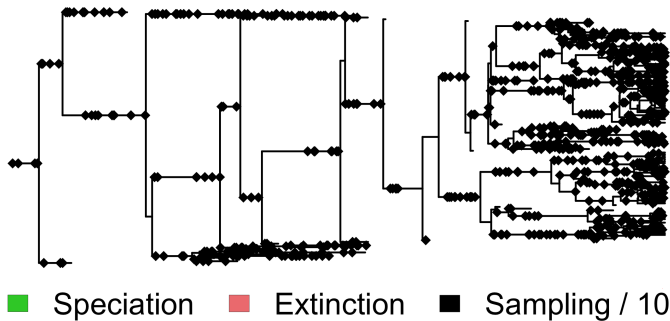
birth-death MCMC



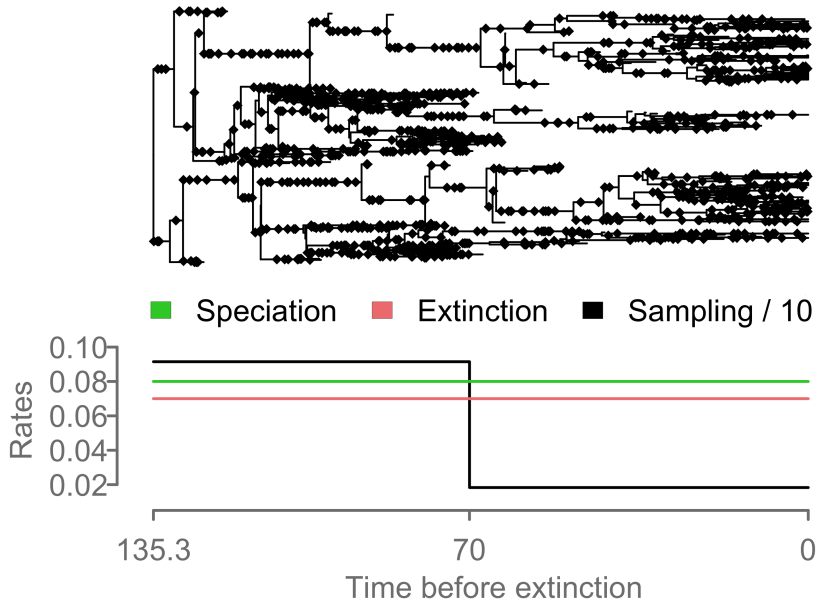
reversible-jump MCMC

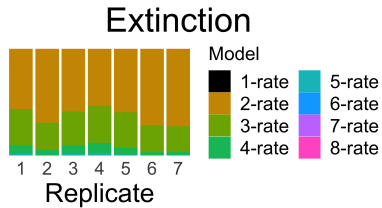
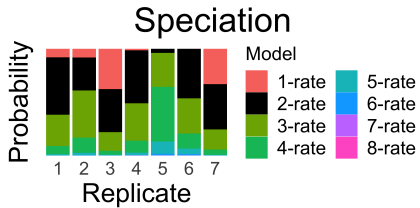


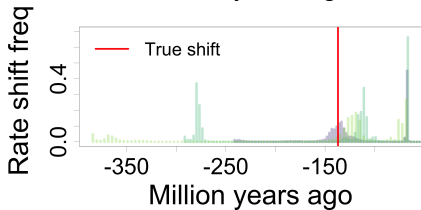
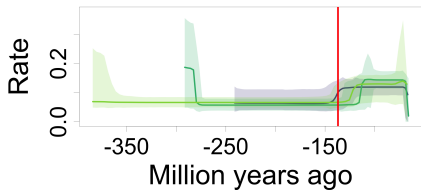
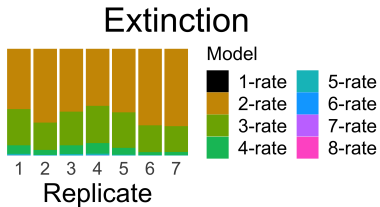
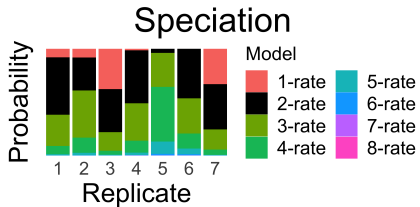
Scenario 1

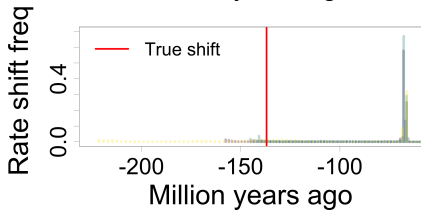
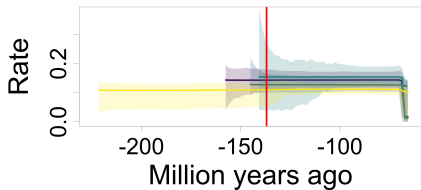
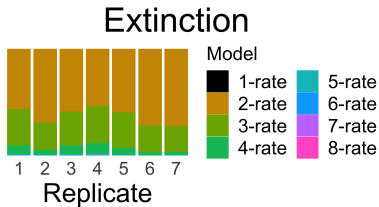
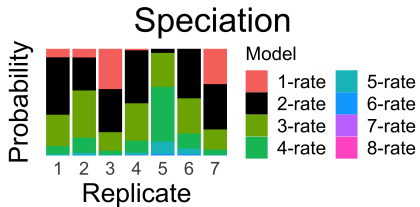


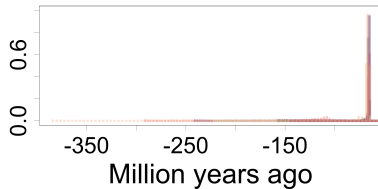
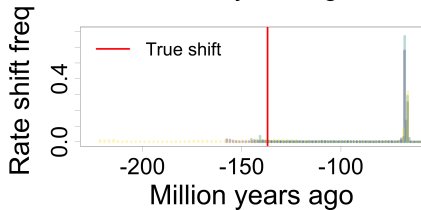
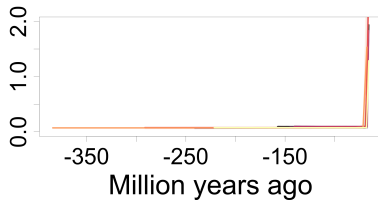
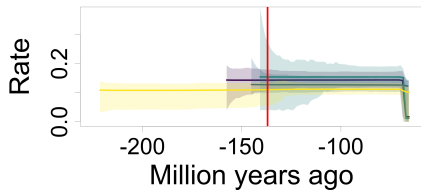
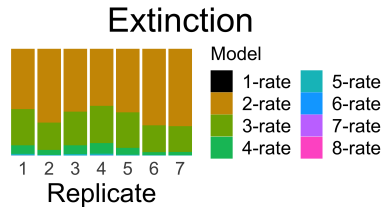
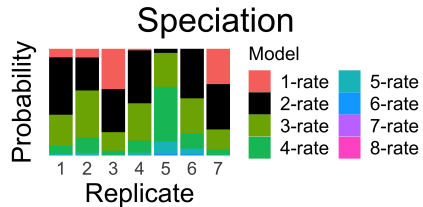
Scenario 2



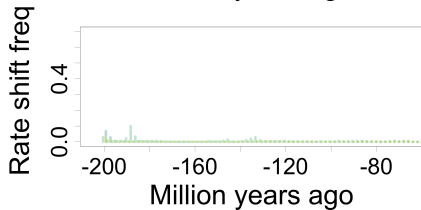
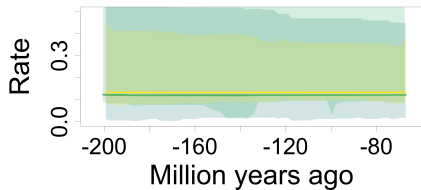
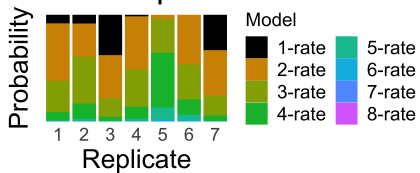




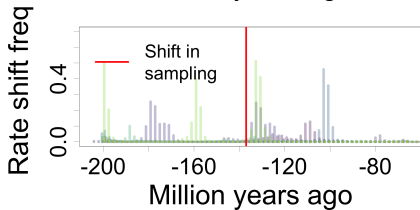
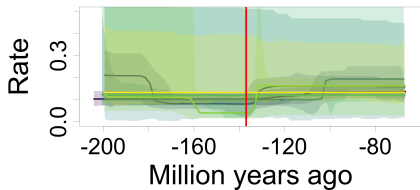
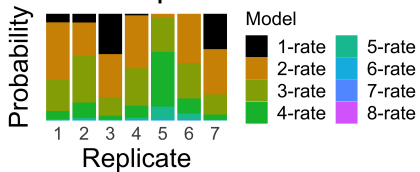




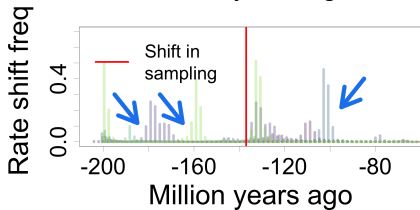
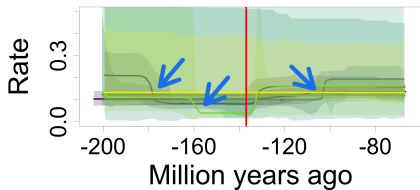
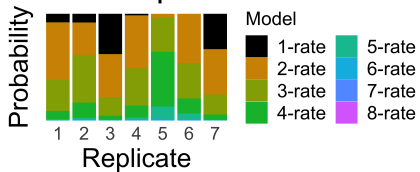
Speciation

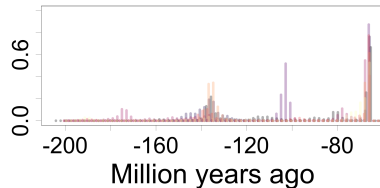
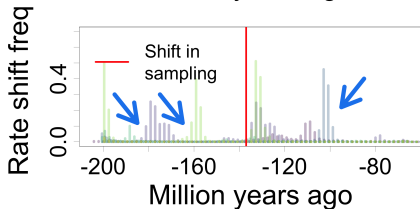
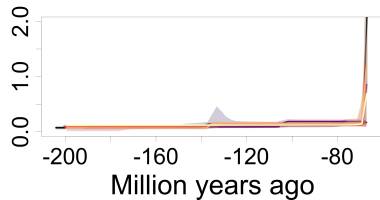
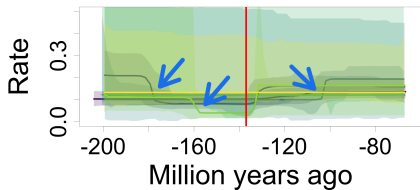
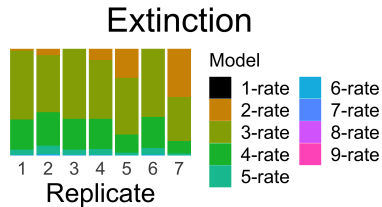
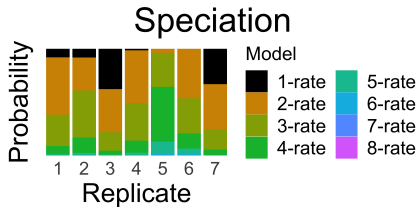


Speciation

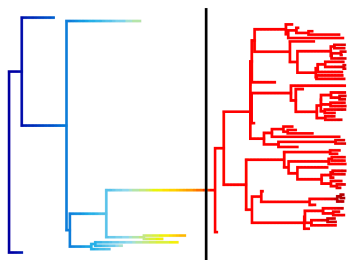


Speciation



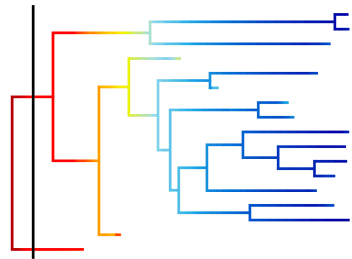
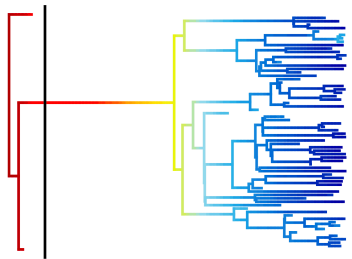
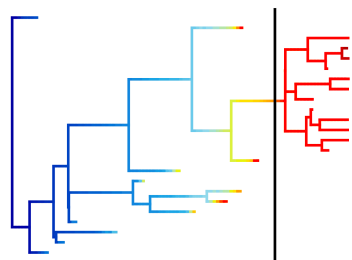


70 tips

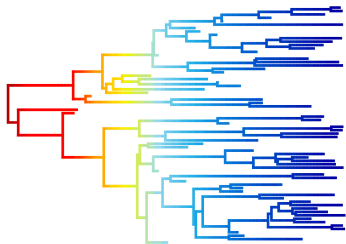


Shift location

Fractional subsampling



70 tips



Fractional subsampling

